

CARTERET & PAMLICO COUNTIES
DB00589

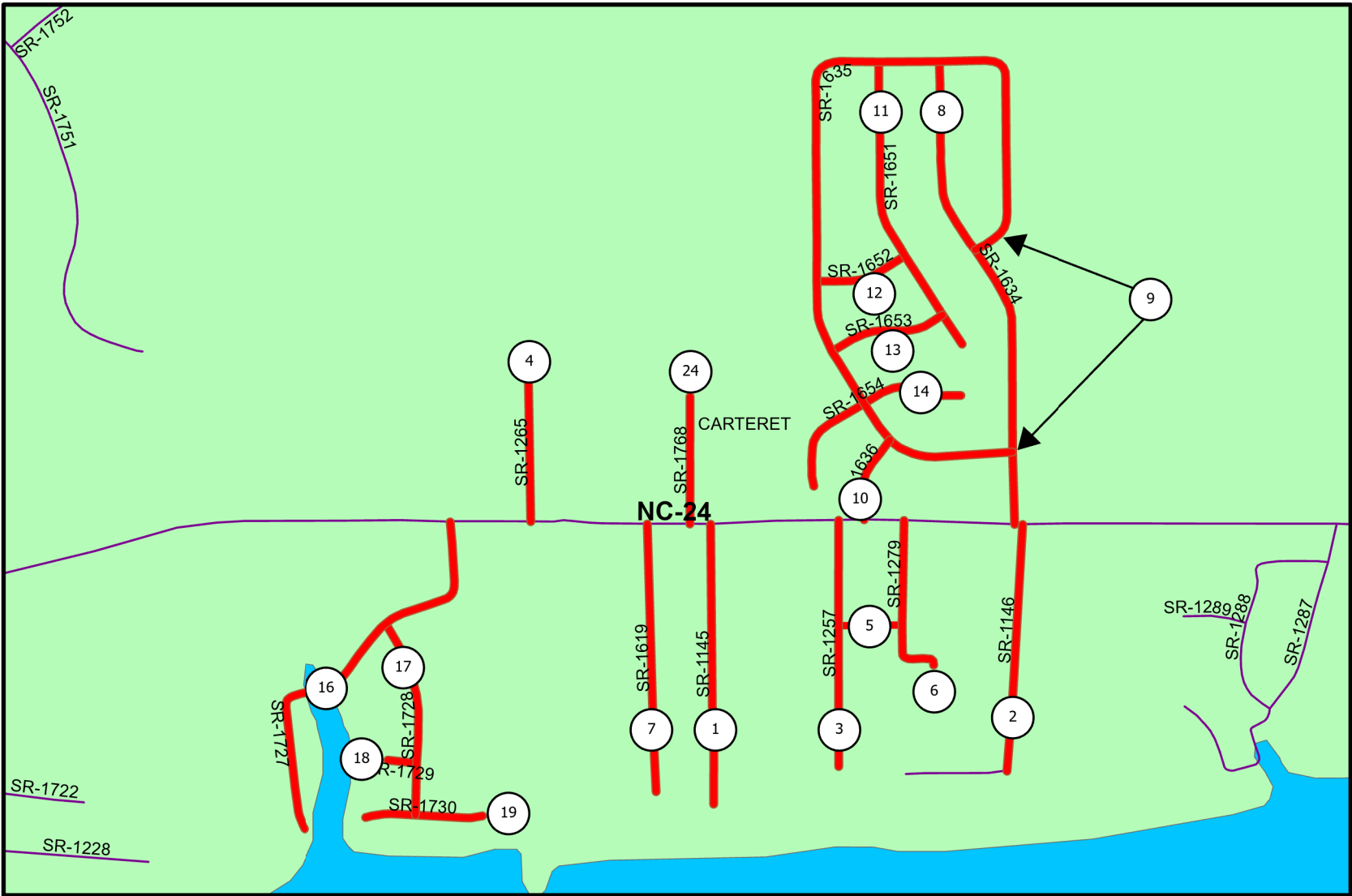
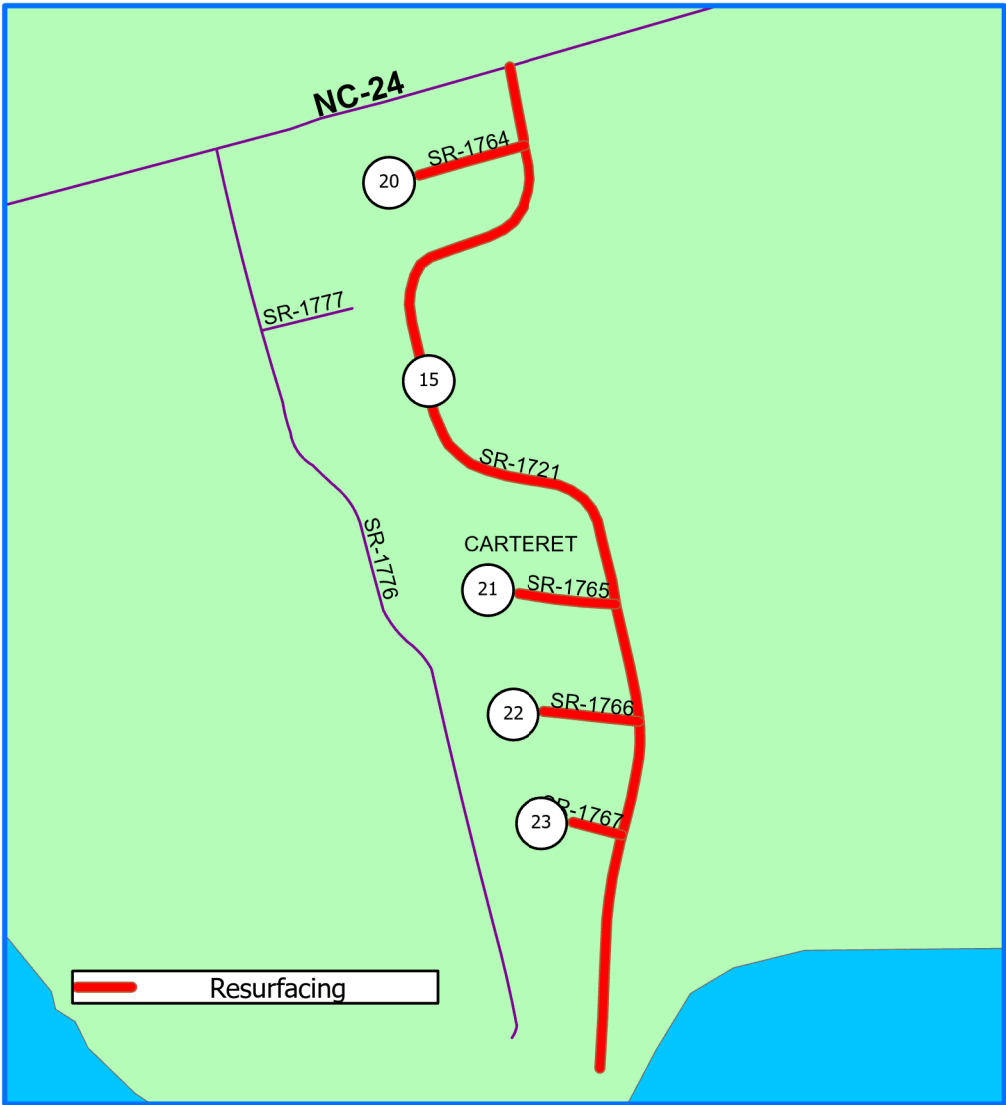
WBS# 2025CPT.02.11.20161
2025CPT.02.12.20691

TYPE OF WORK : MILL PATCHING, RESURFACING, AND SHOULDER RECONSTRUCTION

PROJECT REFERENCE NO.	SHEET NO.
DB00589	1

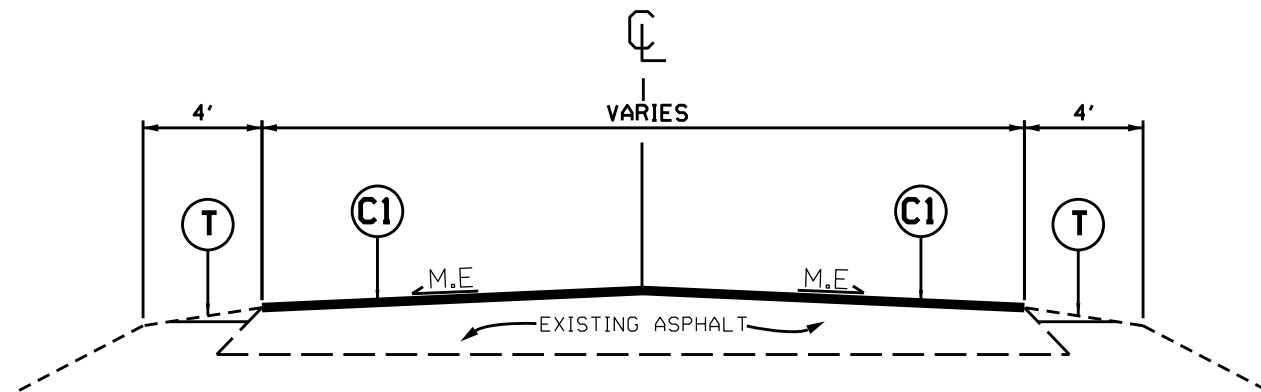


NCDOT
DIVISION 2



TYPICAL SECTION NO. 1

MAPS 1 THRU 30



NOTE:

- PERFORM FULL DEPTH MILL PATCHING AT LOCATIONS AND WIDTHS AS SHOWN ON SHEET 5. PLACE ASPHALT BASE COURSE B25.0C IN ONE LIFT TO BACKFILL.
- PERFORM 6 INCH FULL DEPTH MILL PATCHING AT LOCATIONS AND WIDTHS ON MAP 25 AS SHOWN ON SHEET 5. PLACE ASPHALT BASE COURSE B25.0C IN ONE LIFT TO BACKFILL.
- PLACE ASPHALT SURFACE COURSE S9.5B AT FULL WIDTH OF THE EXISTING ASPHALT PAVEMENT, AS DIRECTED BY THE ENGINEER.
- INCLUDES INCIDENTAL MILLING AT THE ENDS OF THE MAIN LINE AND Y-LINE SECTIONS, AS DIRECTED BY THE ENGINEER.
- PERFORM SHOULDER RECONSTRUCTION AFTER PAVING IS COMPLETED.

PAVEMENT SCHEDULE

C1	PROP. APPROX. 1.5' ASPHALT CONCRETE SURFACE COURSE,TYPE S9.5B AT AN AVERAGE RATE OF 165 LBS. PER SQ. YD.
T	SHOULDER RECONSTRUCTION
V1	INCIDENTAL MILLING.
DRAWINGS NOT TO SCALE	

NOTE: PAVEMENT EDGE SLOPES ARE 1:1 UNLESS SHOWN OTHERWISE.

PROJECT NO.	SHEET NO.	TOTAL NO.
DB00589	4	

SUMMARY OF QUANTITIES

PROJECT NO	COUNTY	MAP NO	ROUTE	DESCRIPTION	TYP NO	LANES	LANE TYPE	LENGTH	WIDTH	HAULING NCDOT SUPPLIED SHOULDER MATERIAL	INCIDENTAL STONE BASE	SHOULDER RECONSTRUCTION	INCIDENTAL MILLING	SURFACE COURSE, \$9.5B	ASPHALT BINDER FOR PLANT MIX	4" DEPTH MILL PATCHING EXISTING PAVEMENT - B 25.0 C	6" DEPTH MILL PATCHING EXISTING PAVEMENT - B 25.0 C	ADJ. OF METER OR VALVE BOX	TEMPORARY SILT FENCE	WATTLE	SEED & MULCHING	RESPONSE FOR EROSION CONTROL	WORK ZONE ADVANCE/G ENERAL WARNING SIGNING	TEMPORARY TRAFFIC CONTROL																			
								MI	FT	EA	TONS	SMI	SY	TONS	TONS	TON	TON	EA	LF	LF	AC	EA	SF	LS																			
2025CPT.01.11.20161	Carteret	1	SR-1145 / BOGUE SOUND DR	FROM CUL-DE-SAC TO NC 24	1	2	2WU	0.39	18	16	20	0.78	150	367	24				62	100	0.39	1	125	0.03																			
TOTAL FOR MAP NO. 1								0.39		16	20	0.78	150	367	24				62	100	0.39	1	125	0.03																			
2025CPT.01.11.20161	Carteret	2	SR-1146 / HARDY RD	FROM DEAD END TO NC 24	1	2	2WU	0.34	20	17	14	0.68	150	348	28	93			54		0.34		125	0.03																			
TOTAL FOR MAP NO. 2								0.34		17	14	0.68	150	348	28	93			54		0.34		125	0.03																			
2025CPT.01.11.20161	Carteret	3	SR-1257 / HOLLY LN	FROM DEAD END TO NC 24	1	2	2WU	0.35	20	14	18	0.70	150	353	23				56		0.35		125	0.03																			
TOTAL FOR MAP NO. 3								0.35		14	18	0.70	150	353	23				56		0.35		125	0.03																			
2025CPT.01.11.20161	Carteret	4	SR-1265 / HANKISON DR	FROM END PAV'T TO NC 24	1	2	2WU	0.25	21	10	13	0.50	150	291	19				40		0.25		125	0.02																			
TOTAL FOR MAP NO. 4								0.25		10	13	0.50	150	291	19				40		0.25		125	0.02																			
2025CPT.01.11.20161	Carteret	5	SR-1278 / SOUND VIEW AVE	FROM SR 1257 HOLLY LN TO SR 1279 SUNSET BLVD	1	2	2WU	0.09	21	4	5	0.18		107	7			2	14		0.09		125	0.01																			
TOTAL FOR MAP NO. 5								0.09		4	5	0.18		107	7			2	14		0.09		125	0.01																			
2025CPT.01.11.20161	Carteret	6	SR-1279 / SUNSET BLVD	FROM END MAINTENANCE TO NC 24	1	2	2WU	0.22	20	9	11	0.44	150	222	14				35	100	0.22	1	125	0.02																			
TOTAL FOR MAP NO. 6								0.22		9	11	0.44	150	222	14				35	100	0.22	1	125	0.02																			
2025CPT.01.11.20161	Carteret	7	SR-1619 / MERRILL DR	FROM DEAD END TO NC 24	1	2	2WU	0.37	20	15	19	0.74	250	382	28	53			59		0.37		125	0.02																			
TOTAL FOR MAP NO. 7								0.37		15	19	0.74	250	382	28	53			59		0.37		125	0.02																			
2025CPT.01.11.20161	Carteret	8	SR-1634 / E SOUTHWINDS DR	FROM SR 1635 RATTAN ST TO NC 24	1	2	2WU	0.67	20	27	34	1.34	100	691	45				107		0.67		125	0.06																			
TOTAL FOR MAP NO. 8								0.67		27	34	1.34	100	691	45				107		0.67		125	0.06																			
2025CPT.01.11.20161	Carteret	9	SR-1635 / RATTAN ST/W SOUTHWINDS DR	FROM SR 1634 E SOUTHWINDS DR TO SR 1634 E SOUTHWINDS DR	1	2	2WU	1.28	20	51	64	2.56		1,309	85				205		1.28		145	0.10																			
TOTAL FOR MAP NO. 9								1.28		51	64	2.56		1,309	85				205		1.28		145	0.10																			
2025CPT.01.11.20161	Carteret	10	SR-1636 / PARADISE LN	FROM SR 1635 W SOUTHWINDS DR TO NC 24	1	2	2WU	0.12	20	5	6	0.24	100	131	9				19		0.12		125	0.01																			
TOTAL FOR MAP NO. 10								0.12		5	6	0.24	100	131	9				19		0.12		125	0.01																			
2025CPT.01.11.20161	Carteret	11	SR-1651 / CANTON ST	FROM CUL-DE-SAC TO SR 1635 RATTAN ST	1	2	2WU	0.43	20	17	22	0.86		460	35	93		2	69		0.43		125	0.04																			
TOTAL FOR MAP NO. 11								0.43		17	22	0.86		460	35	93		2	69		0.43		125	0.04																			
2025CPT.01.11.20161	Carteret	12	SR-1652 / MING DR	FROM SR 1635 W SOUTHWINDS DR TO SR 1651 CANTON ST	1	2	2WU	0.13	20	5	7	0.26		142	11	25			21		0.13		125	0.01																			
TOTAL FOR MAP NO. 12								0.13		5	7	0.26		142	11	25			21		0.13		125	0.01																			
2025CPT.01.11.20161	Carteret	13	SR-1653 / PAGODA CT	FROM SR 1635 W SOUTHWINDS DR TO SR 1651 CANTON ST	1	2	2WU	0.17	20	7	9	0.34		178	15	53			27		0.17		125	0.01																			
TOTAL FOR MAP NO. 13								0.17		7	9	0.34		178	15	53			27		0.17		125	0.01																			
2025CPT.01.11.20161	Carteret	14	SR-1654 / RICKSHA CT/ORIENTAL CT	FROM CUL-DE-SAC TO CUL-DE-SAC	1	2	2WU	0.3	20	12	15	0.60		356	25	23			48		0.30		125	0.03																			
TOTAL FOR MAP NO. 14								0.3		12	15	0.60		356	25	23			48		0.30		125	0.03																			
2025CPT.01.11.20161	Carteret	15	SR-1721 / BLUE HERON DR	FROM CUL-DE-SAC TO NC 24	1	2	2WU	0.83	20	33	42	1.66	500	880	62	92			133		0.83		125	0.07																			
TOTAL FOR MAP NO. 15								0.83		33	42	1.66	500	880	62	92			133		0.83		125	0.07																			
2025CPT.01.11.20161	Carteret	16	SR-1727 / BROOK LN	FROM CUL-DE-SAC TO NC 24	1	2	2WU	0.57	20	23	28	1.14	100	616	40				91		0.57		125	0.05																			
TOTAL FOR MAP NO. 16								0.57		23	28	1.14	100	616	40				91		0.57		125	0.05																			
2025CPT.01.11.20161	Carteret	17	SR-1728 / RICKY LN	FROM SR 1730 MARY LN TO SR 1727 BROOK LN	1	2	2WU	0.28	20	11	14	0.56		301	29	177		2	45		0.28		125	0.02																			
TOTAL FOR MAP NO. 17								0.28		11	14	0.56		301	29	177		2	45		0.28		125	0.02																			
2025CPT.01.11.20161	Carteret	18	SR-1729 / GREY LN	FROM CUL-DE-SAC TO SR 1728 RICKY LN	1	2	2WU	0.04	20	2	2	0.08		65	4				6		0.04		125	0.01																			
TOTAL FOR MAP NO. 18								0.04		2	2	0.08		65	4				6		0.04		125	0.01																			
2025CPT.01.11.20161	Carteret	19	SR-1730 / MARY LN	FROM CUL-DE-SAC TO DEAD END	1	2	2WU	0.15	20	6	8	0.30		172	12	18			24		0.15		125	0.01																			
TOTAL FOR MAP NO. 19								0.15		6	8	0.30		172	12	18			24		0.15		125	0.01																			
2025CPT.01.11.20161	Carteret	20	SR-1764 / HERON CT	FROM CUL-DE-SAC TO SR 1721 BLUE HERON DR	1	2	2WU	0.08	20	3	4	0.16		106	7				13		0.08		125	0.01																			
TOTAL FOR MAP NO. 20								0.08		3	4	0.16		106	7				13		0.08		125	0.01																			
2025CPT.01.11.20161	Carteret	21	SR-1765 / OSPREY CT	FROM CUL-DE-SAC TO SR 1721 BLUE HERON RD	1	2	2WU	0.05	20	2	3	0.10		79	5				8		0.05		125	0.01																			
TOTAL FOR MAP NO. 21								0.05		2	3	0.10		79	5				8		0.05		125	0.01																			
2025CPT.01.11.20161	Carteret	22	SR-1766 / EGRET CT	FROM CUL-DE-SAC TO SR 1721 BLUE HERON RD	1	2	2WU	0.07	20	3	4	0.14		101	7				11	100	0.07	1	125	0.01																			
TOTAL FOR MAP NO. 22								0.07		3	4	0.14		101	7				11	100	0.07	1	125	0.01																			
2025CPT.01.11.20161	Carteret	23	SR-1767 / PELICAN CT	FROM CUL-DE-SAC TO SR 1721 BLUE HERON RD	1	2	2WU	0.04	20	2	2	0.08		63	4				6		0.04		125	0.01																			
TOTAL FOR MAP NO. 23								0.04		2	2	0.08		63	4				6		0.04		125	0.01																			
2025CPT.01.11.20161	Carteret	24	SR-1768 / WOODED ACRES DR	FROM NC 24 TO END MAINTENANCE	1	2	2WU	0.17	18	7	9	0.34	150	153	15	101			27		0.17		125	0.01																			
TOTAL FOR MAP NO. 24								0.17		7	9	0.34	150	153	15	101			27		0.17		125	0.01																			
TOTAL FOR PROJ NO. 2025CPT.01.11.20161								7.39		301	373	14.78	1,950	7,873	553	728		6	1,180	300	7.39	3	3,020	0.63																			
																							728																			125	0.03
2025CPT.01.12.20691	Pamlico	25	SR-1303 / CAMP DON LEE RD	FROM END PAV'T TO SR 1301 DON LEE RD	1	2	2WU	0.31	21	12	16	0.62	100	345	34		235		50		0.31		125	0.03																			
TOTAL FOR MAP NO. 25								0.31		12	16	0.62	100	345	34		235		50		0.31		125	0.07																			
2025CPT.01.12.20691	Pamlico	26	SR-1304 / PIERSON POINT RD/RIVER RD	FROM SR 1301 DON LEE RD TO END PAV'T	1	2	2WU	0.62	18	25	31	1.24	100	578	38			2	99		0.62		125	0.07																			
TOTAL FOR MAP NO. 26								0.62		25	31	1.24	100	578	38			2	99		0.62		125	0.06																			
2025CPT.01.12.20691	Pamlico	27	SR-1306 / TAYLOR NECK RD	FROM END PAV'T TO SR 1301 DON LEE RD	1	2	2WU	0.7	20	28	35	1.40	100	711	48	34			112	100	0.70	1	125	0.06																			
TOTAL FOR MAP NO. 27								0.7		28	35	1.40	100	711	48	34			112	100	0.70	1	155	0.10																			
2025CPT.01.12.20691	Pamlico	28	SR-1307 / LOVICK LEE RD	FROM END MAINTENANCE TO SR 1005 KERSHAW RD	1	2	2WU	1.37	20	55	69	2.74	100	1,396	100	169			219		1.37		155	0.10																			
TOTAL FOR MAP NO. 28								1.37		55	69	2.74	100	1,396	100	169			219		1.37		140	0.10																			
2025CPT.01.12.20691	Pamlico	29	SR-1350 / JO JANE RD	FROM END MAINTENANCE TO SR 1307 LOVICK LEE RD	1	2	2WU	1.22	19	49	61	2.44		1,190	77				195		1.22		140	0.10																			
TOTAL FOR MAP NO. 29								1.22		49	61	2.44		1,190	77				195		1.22		125	0.01																			
2025CPT.01.12.20691	Pamlico	30	SR-1368 / JANE LN	FROM END MAINTENANCE TO SR 1350 JO JANE LN	1	2	2WU	0.17	19	7	9	0.34	150	173	11			1	27		0.17		125	0.01																			
TOTAL FOR MAP NO. 30								0.17		7	9	0.34	150	173	11			1	27		0.17		795	0.37																			
TOTAL FOR PROJ NO. 2025CPT.01.12.20691								4.39		176	221	8.78	550	4,393	308	203	235	3	702	100	4.39	1																					
GRAND TOTAL								11.78		477	594	23.5																															

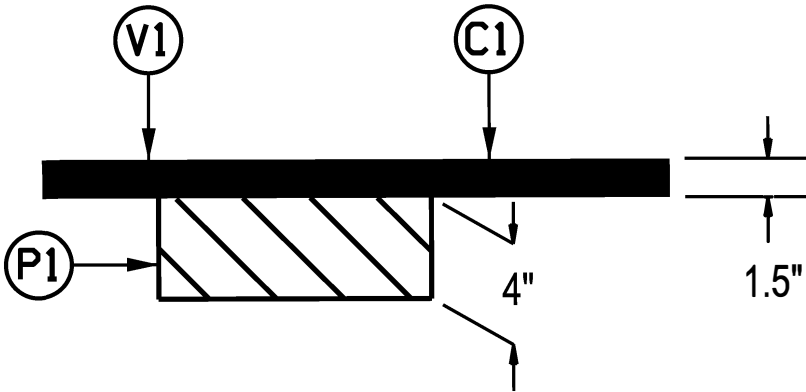
PROJECT NO.	SHEET NO.	TOTAL NO.
DB00589	5	

4" MILL PATCHING	STA.	STA.	WIDTH	LOC.	MAP		STA.	STA.	WIDTH	LOC.	MAP
	7+43	7+76	10'	LT	2		3+44	3+91		FULL WIDTH	13
	7+76	8+43		FULL WIDTH	2		6+34	6+75		FULL WIDTH	13
	8+43	9+28	10'	LT	2		7+98	8+30	7'	RT	13
	8+95	9+22	10'	RT	2		0+84	1+13	7'	CTR	14
	10+38	10+77	10'	LT	2		3+74	4+32	7'	RT	14
	11+30	11+61	10'	RT	2		5+34	5+66	7'	RT	14
	3+91	4+16	10'	LT	7		12+52	12+90	7'	RT	15
	10+95	11+41	7'	CTR	7		36+57	37+51	7'	RT	15
	12+08	12+53	7'	CTR	7		40+54	41+74	12'	RT	15
	15+83	16+41	10'	RT	7		41+74	43+36	7'	RT	15
	17+24	17+79	10'	RT	7		10+59	13+35		FULL WIDTH	17
	2+60	2+96	10'	LT	11		13+80	14+36		FULL WIDTH	17
	7+80	8+13	7'	LT	11		6+43	6+83	10'	LT	19
	10+67	10+94	10'	LT	11		7+04	7+41	7'	RT	19
	11+17	11+43	10'	RT	11		0+32	1+56		FULL WIDTH	24
	12+77	13+24	7'	CTR	11		6+01	6+55	7'	LT	24
	15+24	15+41	10'	RT	11		6+55	7+83	9'	LT	24
	18+79	19+70	10'	LT	11		13+24	13+47	7'	RT	27
	19+77	20+73	10'	RT	11		33+04	34+43	7'	LT	27
	0+32	0+44	7'	CTR	12		34+02	34+19	7'	CTR	27
	0+88	1+15	10'	RT	12		52+45	54+95	7'	LT	28
	5+67	5+89	10'	LT	12		55+66	57+03	7'	LT	28
	6+35	6+69	7'	RT	12		60+29	63+16	7'	LT	28
	6+54	6+65	11'	LT	12		67+88	70+21	7'	LT	28

6" MILL PATCHING	STA.	STA.	WIDTH	LOC.	MAP
	5+08	7+41		FULL WIDTH	25
	14+30	16+45	4'	RT	25

4" DEPTH MILL PATCHING DETAIL

MAPS 2, 7, 11, 12, 13, 14, 15,
17, 19, 24, 27, AND 28

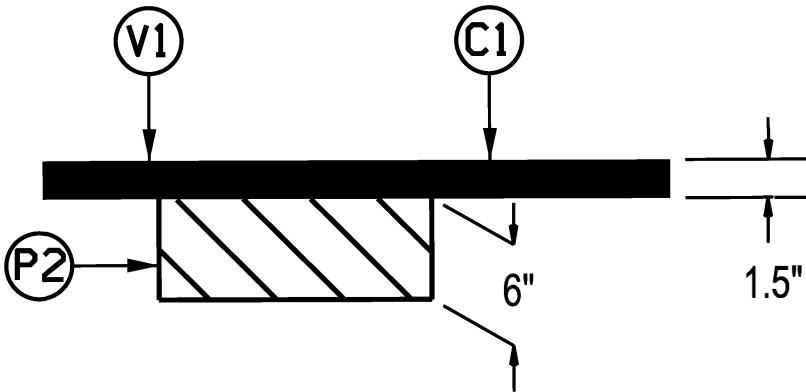


NOTE:

1. THE CONTRACTOR SHALL PERFORM ANY UNIFORM OR INCIDENTAL MILLING AT TIE-INS BEFORE PERFORMING THE 4" DEPTH MILL PATCHING.
2. THE CONTRACTOR SHALL PERFORM THE MILL PATCHING REMOVAL AND REPLACEMENT IN THE SAME DAY.
3. 4" DEPTH MILL PATCHING SHALL BE PERFORMED AT LOCATIONS AS SHOWN ON SHEET 5, AND AS DIRECTED BY THE ENGINEER.

6" DEPTH MILL PATCHING DETAIL

MAP 25

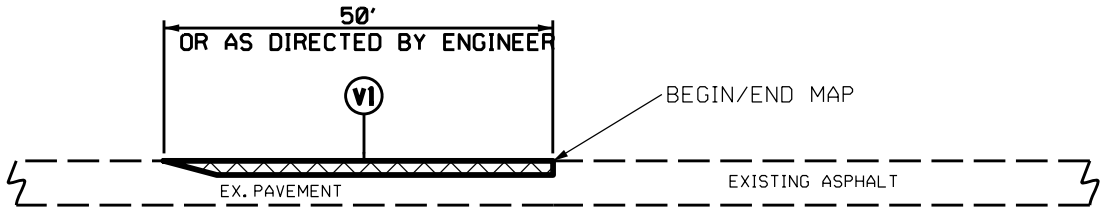


NOTE:

1. THE CONTRACTOR SHALL PERFORM ANY UNIFORM OR INCIDENTAL MILLING AT TIE-INS BEFORE PERFORMING THE 6" DEPTH MILL PATCHING.
2. THE CONTRACTOR SHALL PERFORM THE MILL PATCHING REMOVAL AND REPLACEMENT IN THE SAME DAY.
3. 6" DEPTH MILL PATCHING SHALL BE PERFORMED AT LOCATIONS AS SHOWN ON SHEET 5, AND AS DIRECTED BY THE ENGINEER.

PAVEMENT SCHEDULE	
C1	PROP. APPROX. 1.5" OF ASPHALT CONCRETE SURFACE COURSE, TYPE S9.5B AT AN AVERAGE RATE OF 165.0 LBS. PER SQ. YD.
V1	INCIDENTAL MILLING
P1	4" DEPTH MILL PATCHING W/ B25.0C
P2	6" DEPTH MILL PATCHING W/ B25.0C
DRAWINGS NOT TO SCALE	

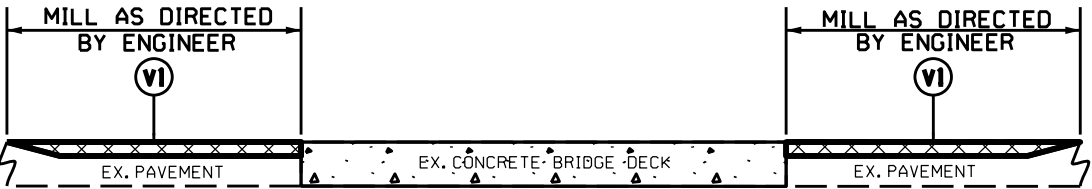
MILLING TYPICALS



DETAIL 1
BEGIN/END MAP TIE-IN

NOTE:

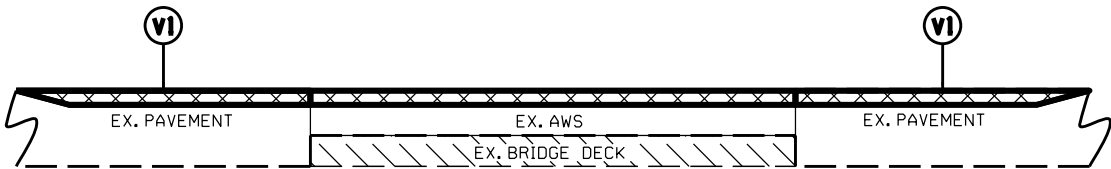
1. MILLING SHALL BE PERFORMED AT MAIN LINE TIE-INS AND Y-LINE TIE-INS AS DIRECTED BY THE ENGINEER, IN ACCORDANCE WITH THIS DETAIL.



DETAIL 2
BRIDGE MILLING

NOTE:

1. MILLING SHALL BE PERFORMED AT THE BRIDGE APPROACHES AS DIRECTED BY THE ENGINEER, IN ACCORDANCE WITH THIS DETAIL.

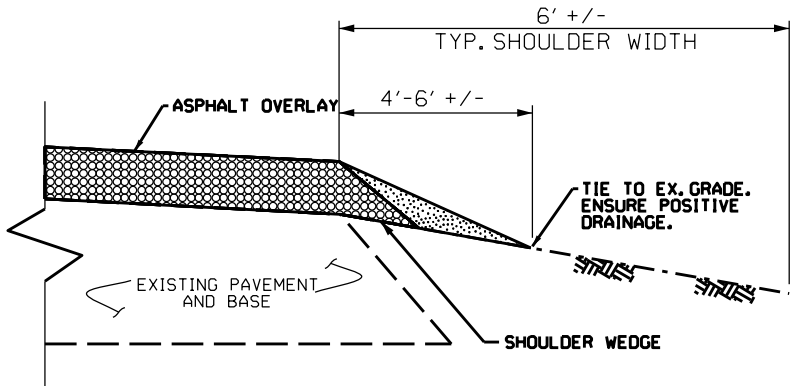


DETAIL 3
BRIDGE MILLING

NOTE:

1. INCLUDES MILLING FOR THE ENTIRE WIDTH OF THE BRIDGE WEARING SURFACE, AS DIRECTED BY THE ENGINEER.

SHOULDER RECONSTRUCTION TYPICAL

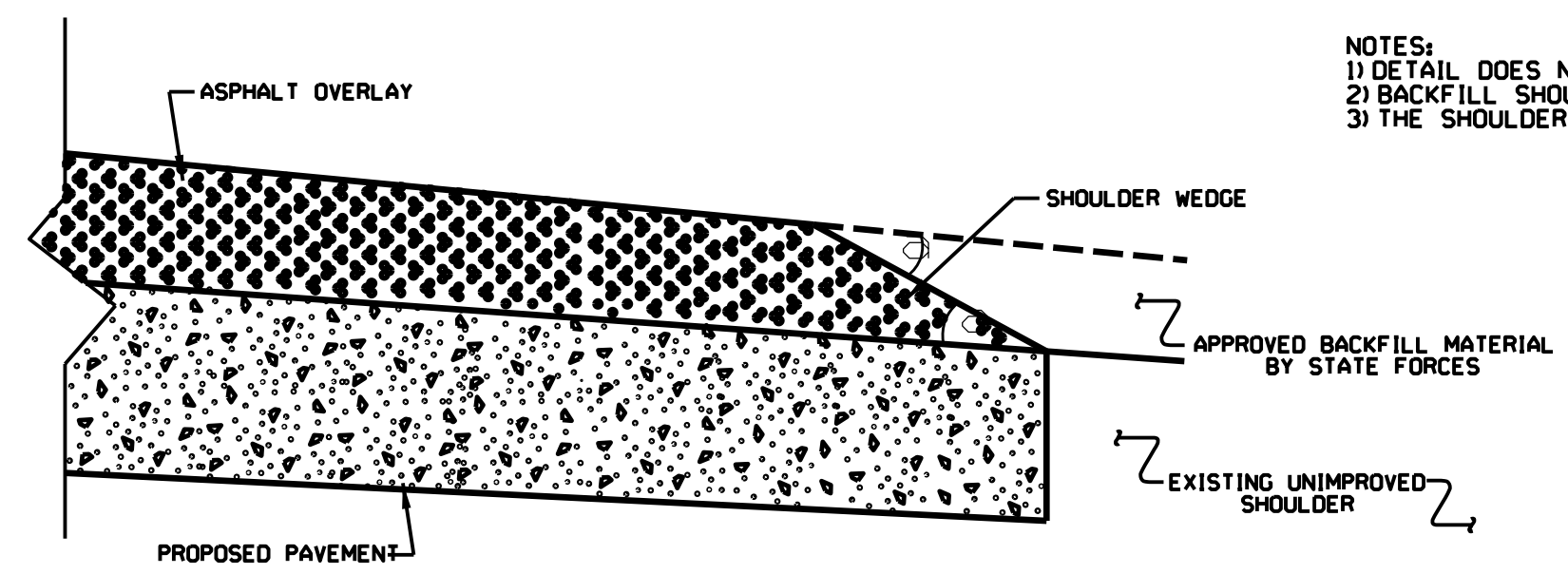


SHOULDER RECONSTRUCTION DETAIL

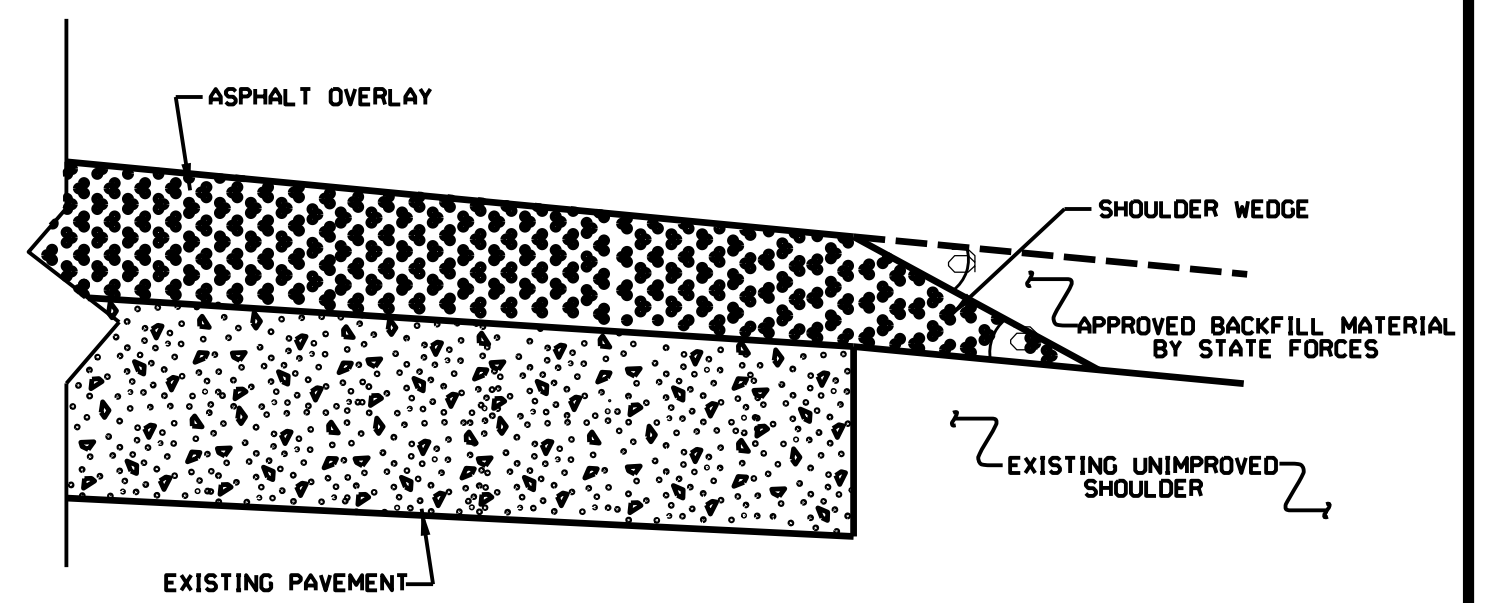
NOTE:

1. SHOULDERS SHALL BE RECONSTRUCTED AS SHOWN IN STD. DWG. NO. 560.01 & 560.02, WITH A MINIMUM SLOPE OF 1" PER FOOT TO ENSURE POSITIVE DRAINAGE AWAY FROM THE ROADWAY.
2. A VEGETATIVE BUFFER SHALL BE MAINTAINED BETWEEN THE DISTURBED AREA ALONG THE EDGE OF PAVEMENT AND THE DITCH SHOULDER POINT TO MINIMIZE EROSION. PULLING DITCHES OR CUTTING SHOULDERS TO GENERATE BORROW MATERIAL WILL NOT BE ALLOWED.
3. REQUIRED BORROW MATERIAL MAY BE OBTAINED FROM NCDOT STOCKPILES. ANY EXCESS MATERIAL SHALL BE DISPOSED OF BY THE CONTRACTOR IN AN APPROVED DISPOSAL SITE.

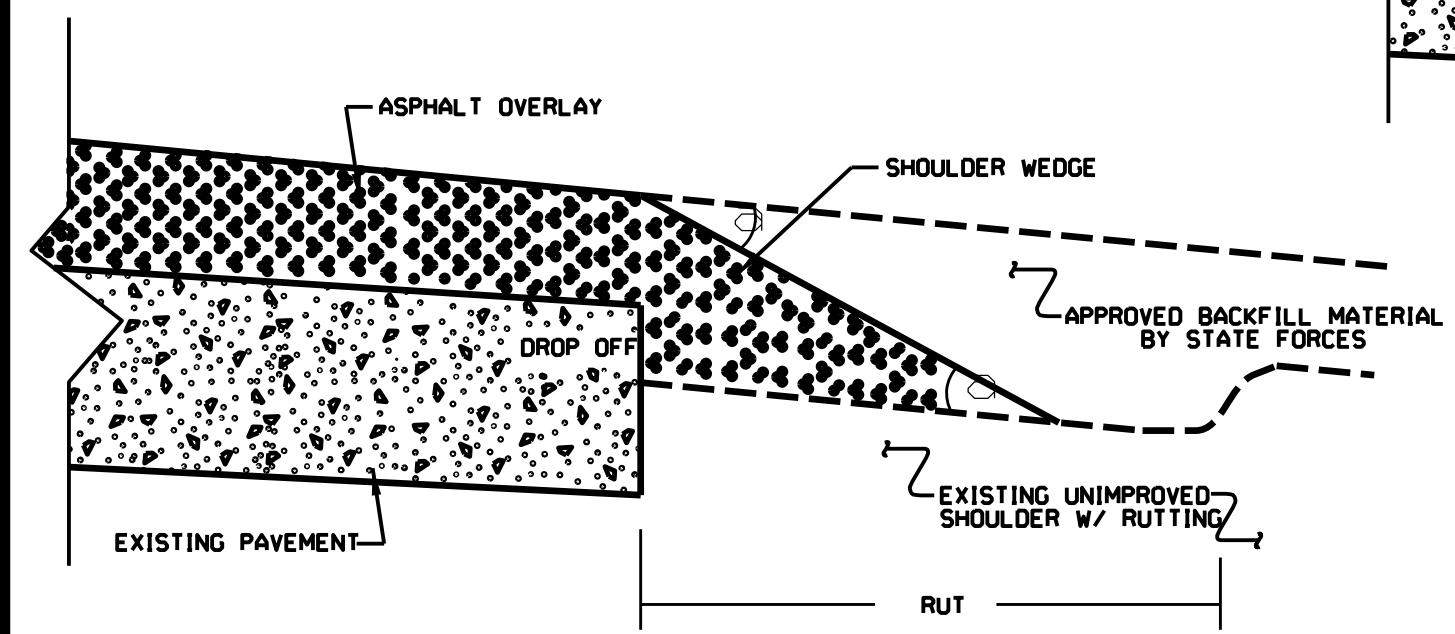
NOTES:
 1) DETAIL DOES NOT APPLY TO OGAFB AND ULTRA-THIN BONDED WEARING COURSE.
 2) BACKFILL SHOULDER WITH APPROVED MATERIAL.
 3) THE SHOULDER WEDGE DEVICE MAY BE DISENGAGED AT PAVED DRIVEWAYS AND SIDE STREETS.



SHOULDER WEDGE DETAIL
 (Resurfacing Projects w/ Widening or
 with Existing Paved Shoulder having no dropoffs)



SHOULDER WEDGE DETAIL
 (Resurfacing Projects w/ NO Widening)



SHOULDER WEDGE DETAIL
 (Resurfacing Adjacent to
 Rutted Shoulder)

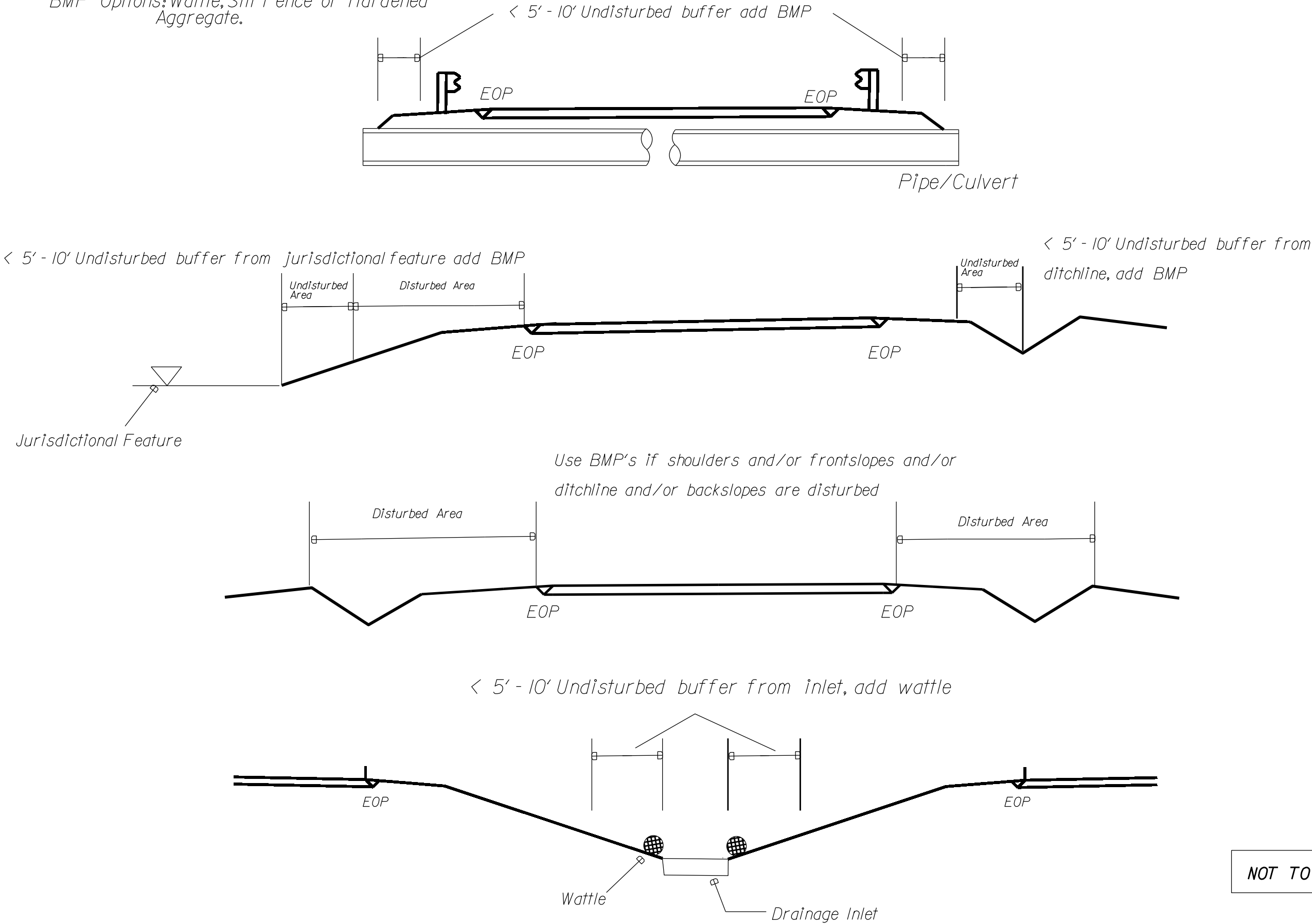
- SHOULDER WEDGE ANGLE = 30°

CONTRACT STANDARDS AND DEVELOPMENT UNIT			
Office 919-787-6430		FAX 919-239-4119	
SHOULDER WEDGE DETAILS			
ORIGINAL BY: T.SPILL	DATE: 7-13-11		
MODIFIED BY:	DATE: 12/15/12		
CHECKED BY:	DATE:		
FILE SPEC: www.dmv.state.nc.us/transportation			

NOTES: Less than 5' - 10' undisturbed buffer from ROW, ditchline, water feature, or drainage inlet, add BMP.

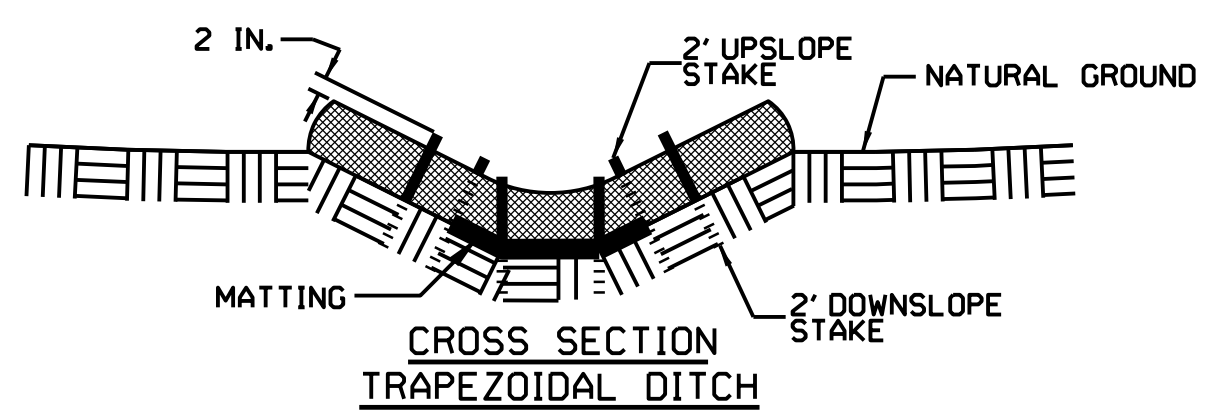
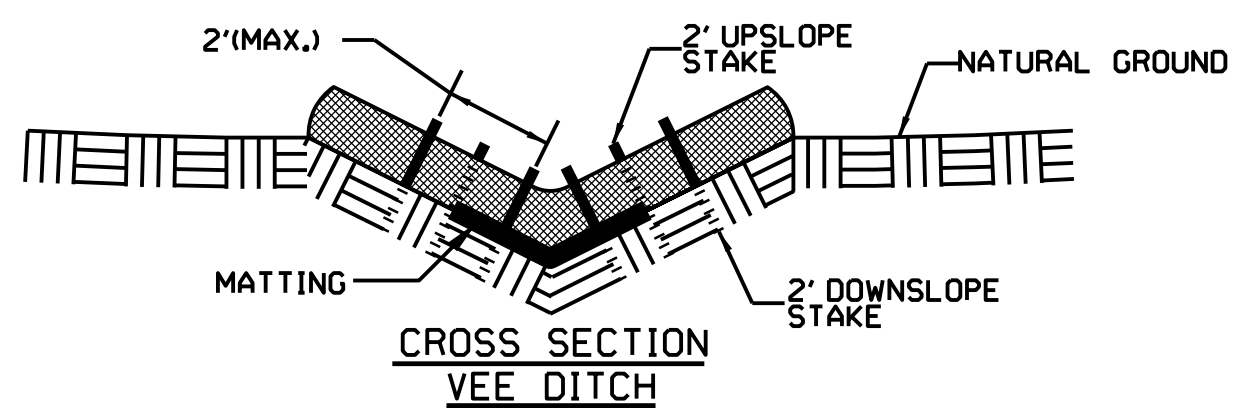
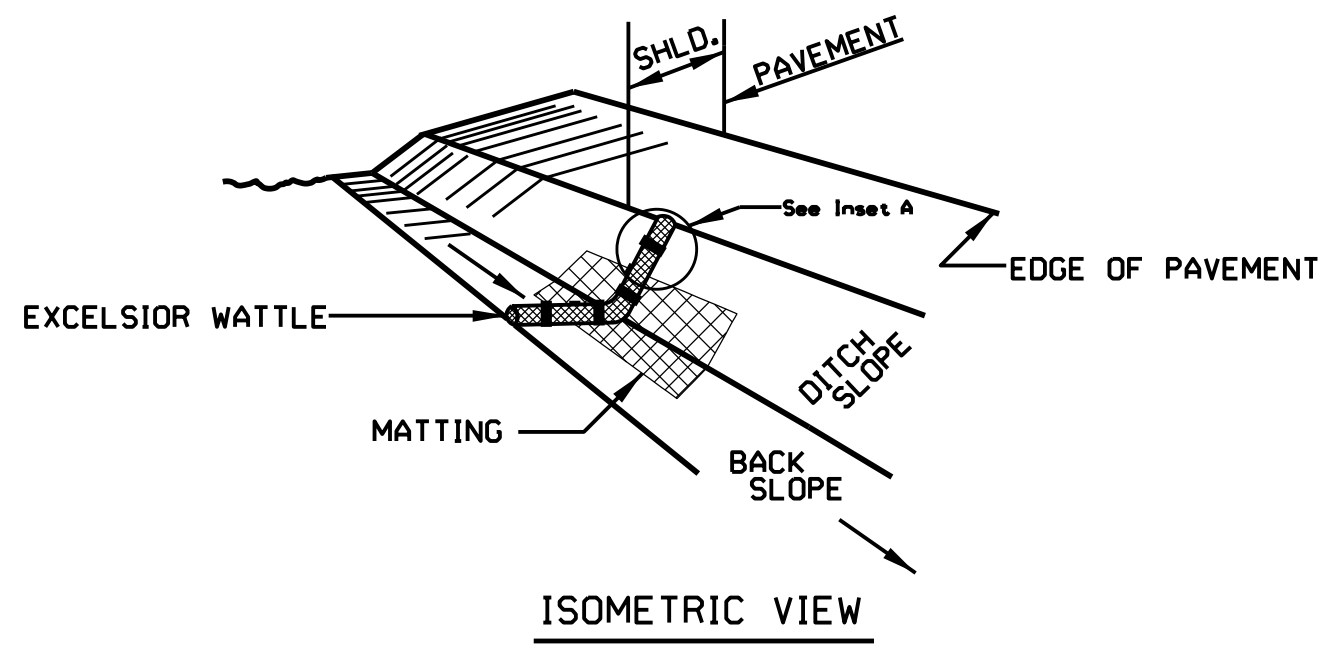
BMP Options: Wattle, Silt Fence or Hardened Aggregate.

EROSION CONTROL DETAIL



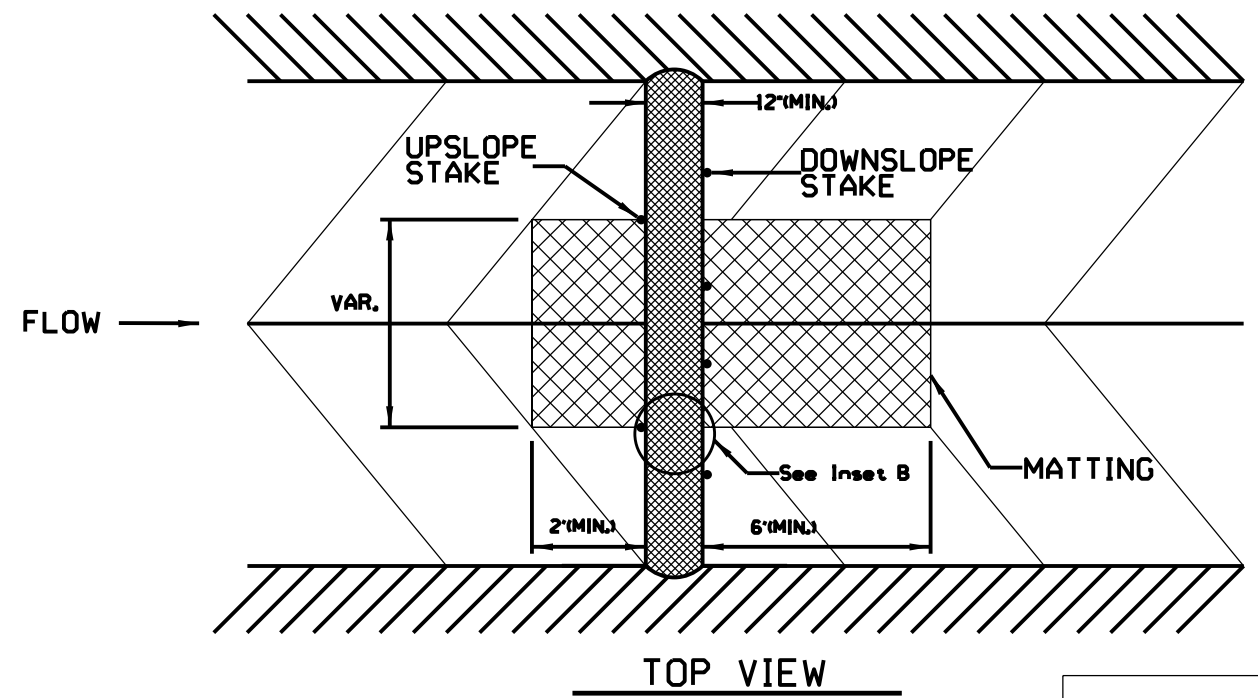
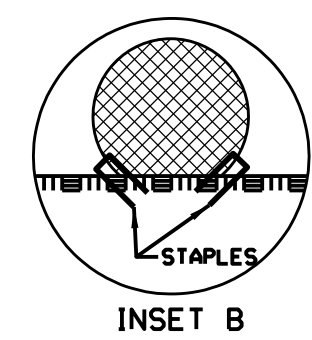
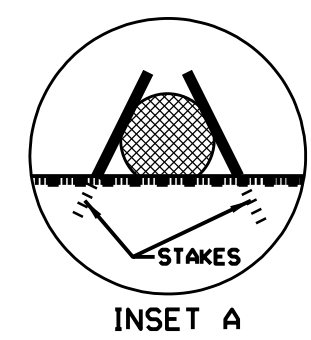
NOT TO SCALE

WATTLE DETAIL



NOTES:

- USE MINIMUM 12 IN. DIAMETER EXCELSIOR WATTLE.
- USE 2 FT. WOODEN STAKES WITH A 2 IN. BY 2 IN. NOMINAL CROSS SECTION.
- ONLY INSTALL WATTLE(S) TO A HEIGHT IN DITCH SO FLOW WILL NOT WASH AROUND WATTLE AND SCOUR DITCH SLOPES AND AS DIRECTED.
- INSTALL A MINIMUM OF 2 UPSLOPE STAKES AND 4 DOWNSLOPE STAKES AT AN ANGLE TO WEDGE WATTLE TO BOTTOM OF DITCH.
- PROVIDE STAPLES MADE OF 0.125 IN. DIAMETER STEEL WIRE FORMED INTO A U SHAPE NOT LESS THAN 12" IN LENGTH.
- INSTALL STAPLES APPROXIMATELY EVERY 1 LINEAR FOOT ON BOTH SIDES OF WATTLE AND AT EACH END TO SECURE IT TO THE SOIL.
- INSTALL MATTING IN ACCORDANCE WITH SECTION 1631 OF THE STANDARD SPECIFICATIONS.



NOT TO SCALE



-Y- LINE SIGNING

PLACED 500' IN ADVANCE OF FLAGGER, PLACED 250' IN ADVANCE OF FLAGGER.